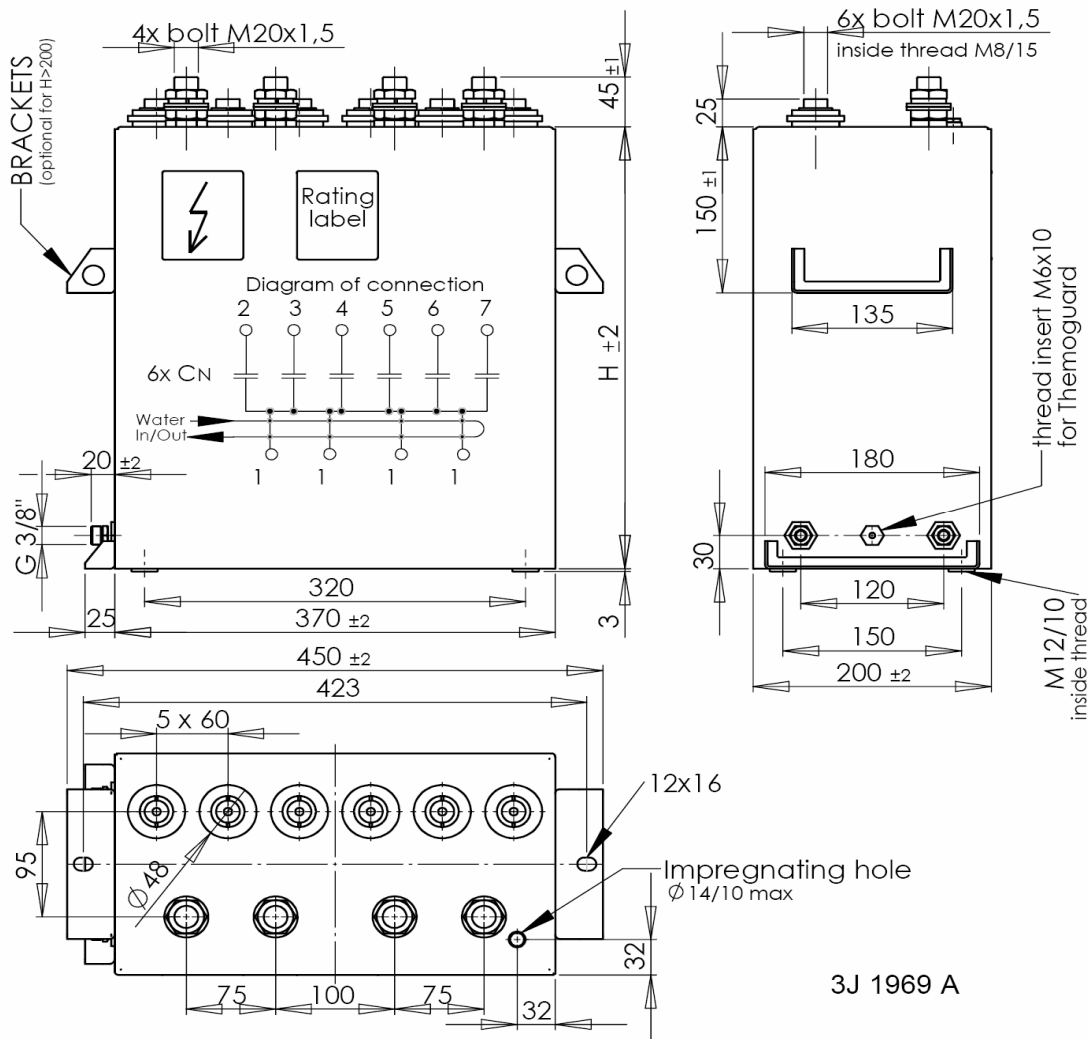


DATA SHEET

MF CAPACITOR

with live case

Outline drawing of : **FRJJS 366-kV/ μ F/kHz**



3J 1969 A

RATINGS:

| FRJJS 366-1,8/6x23,4/2 | 1,8 | 140,5/23,4 | 2 | 5 724 / 954 | 3 180 / 530 | 400 | M20x25/M8x15 | 42 | YES |
|--------------------------|------------|------------------------|-------------|--------------------|-----------------|--------|--------------|-----------|-----------|
| FRJJS 366-1,4/6x31/1,4 | 1,4 | 186,1/31 | 1,4 | 3 208 / 534 | 2 291 / 382 | 400 | M20x25/M8x15 | 42 | YES |
| FRJJS 366-1,0/6x62,5/1,2 | 1,0 | 375/62,5 | 1,2 | 2 826 / 471 | 2 826 / 471 | 400 | M20x25/M8x15 | 42 | YES |
| FRJJS 366-1,0/6x62,5/1 | 1,0 | 375/62,5 | 1 | 2 356 / 393 | 2 356 / 393 | 400 | M20x25/M8x15 | 42 | YES |
| FRJJS 366-0,8/6x97,4/1 | 0,8 | 584,4 / 97,4 | 1 | 2 350 / 392 | 2 938 / 490 | 400 | M20x25/M8x15 | 42 | YES |
| FRJJS 366-0,8/6x62,5/2 | 0,8 | 375 / 62,5 | 2 | 3 016 / 503 | 3 770 / 628 | 400 | M20x25/M8x15 | 42 | YES |
| FRJJS 366-0,8/6x49,8/2 | 0,8 | 298,4 / 49,8 | 2 | 2 400 / 400 | 3 000 / 500 | 400 | M20x25/M8x15 | 42 | YES |
| FRJJS 366-0,8/6x31/3 | 0,8 | 186 / 31 | 3 | 2 246 / 374 | 2 805 / 468 | 200 | M20x25/M8x15 | 21 | NO |
| Type | U_N (kV) | C_N / C_T (μ F) | f_N (kHz) | Q_N / Q_T (kVAr) | I_N / I_T (A) | H (mm) | Bolts M xx | Mass (kg) | BRACKETS |

TECHNICAL CHARACTERISTICS :

| | | | |
|--|---|-----------------------------|--------------------------------|
| Power losses : approx.0,3 | W/kVAr | Impregnant : M-DBT | Modification index : |
| Cooling : nipple G 1/4" > 5 | l/min. | Standard : IEC 60110/98 | Date : Subject : Name: |
| Pressure drop at 5l/min.: < 0,1 | bar | Tapping busbar level : 25mm | |
| Water pressure : 6 | bar | | |
| Operation at cooled busbar only | < 55°C | Max.torque for M20 : 25Nm | |
| Dim.:370x200xH | H=see above | mm | 15.12.06 f. 1,4 kHz added V.M. |
| Testing voltage between terminals : | 2x U_N AC 10sec | DRAWN : BeNo / Sth | |
| Testing voltage between terminals/case : | - | APPVD : | |
| TYPE : | FRJJS 366-kV/μF/kHz | DRW. No. : | 3J 1969 Af |
| | | Date : | 05.06.2006 |

ZEZ SILKO

ZEZ-SILKO s.r.o.
Pod Černým lesem
CZ 56422 ŽAMBERK
Czech Republic

phone : +420 465 673 301
fax : +420 465 612 319
e-mail : obchod@zez-silko.cz
http://www.zez-silko.cz