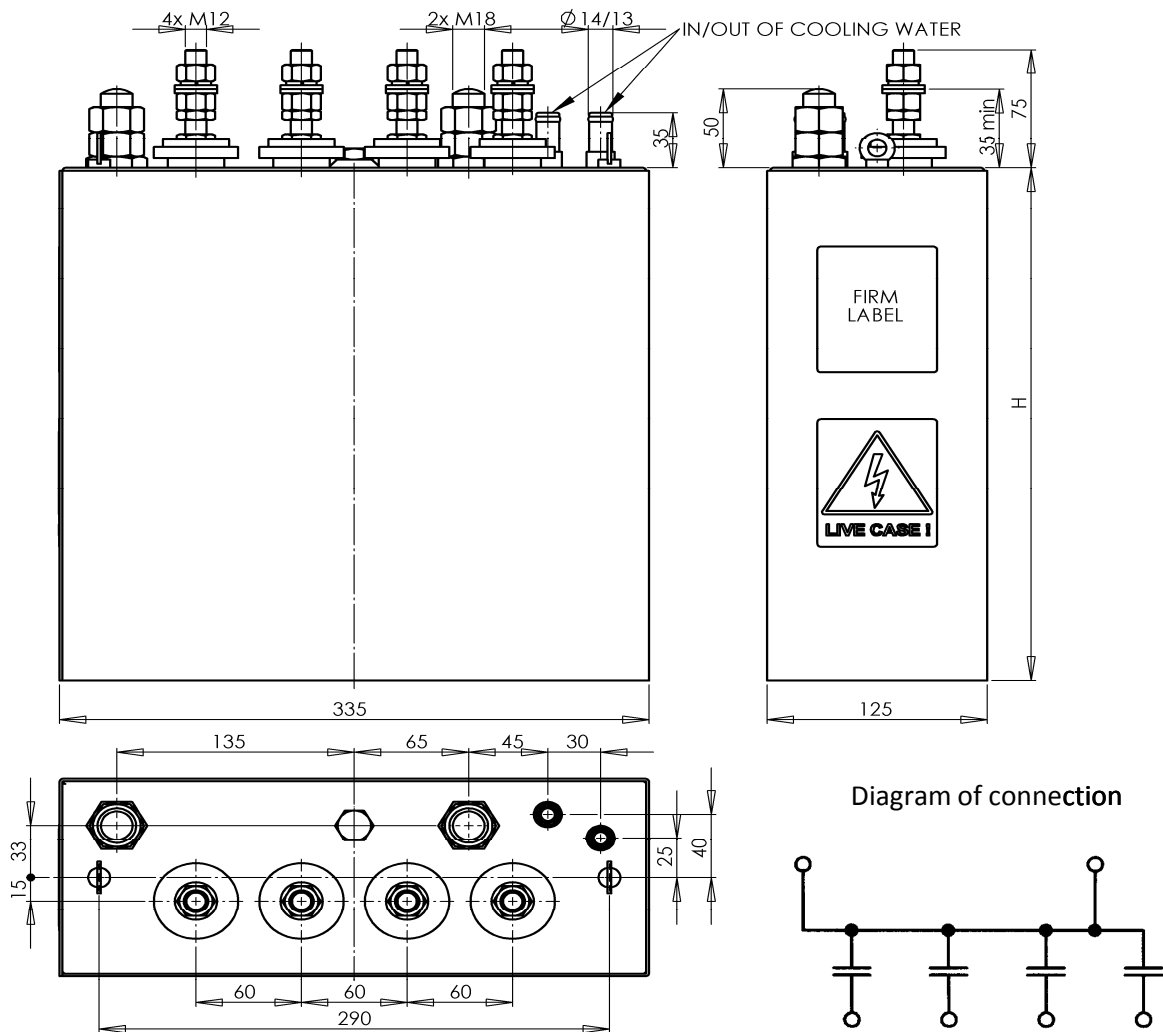


DATA SHEET

MF CAPACITOR

Outline drawing of type : **FRJJS 304 -Un/Cn/fn**



RATINGS:

FRJJS 304-0,8/105/1,5	0,8	105 (4x26)	1,5	634	792	325	26	1:1:1:1
FRJJS 304-1,0/60/2,4	1,0	60 (4x15)	2,4	904	904	325	26	1:1:1:1
FRJJS 304-1,2/80/0,5	1,2	80 (4x20)	0,5	362	302	325	26	1:1:1:1
FRJJS 304-1,5/28/2	1,5	28 (4+ 3x 8)	2,0	792	528	250	16	1:2:2:2
FRJJS 304-0,5/62/4	0,5	62 (4x15,5)	4,0	390	780	250	16	1:1:1:1
FRJJS 304-0,8/40/4	0,8	40 (4x10)	4,0	643	804	250	16	1:1:1:1
FRJJS 304-1,0/60/2	1,0	60 (4x15)	2,0	754	754	325	26	1:1:1:1
Type	U _N [kV]	C _N [μF]	f _N [kHz]	Q _N [kvar]	I _N [A]	H [mm]	weight [kg]	Tapping

TECHNICAL CHARACTERISTICS :

Case length	335 mm	Impregnant:	M-DBT	Rate of cooling water flow :	6l/min
Case width	125 mm	Standard:	IEC 60110/98	Max.outlet water temperature :	40°C
Case height	see table	Capacitance tolerance:	-5/+10%	Water pressure	max.0,6 MPa
Weight	see table	LIVE CASE			
		All-film		Torque for M12 :	15Nm
Order No. :				Torque for M18 :	22Nm
Testing voltage between terminals:		4xUn DC or 2x Un AC for 10sec		DRAWN :	Michalovičová
Testing voltage terminals/case:				APPVD :	Ing.Lipenský
TYPE :	FRJJS 304 -Un/Cn/fn	DRW. No. :	3J 2464 A		25.10.2010
	ZEZ-SILKO s.r.o. Pod Černým lesem CZ 564 22 ŽAMBERK Czech Republic	tel : +420 465 673111 fax : +420 465 612319 e-mail : zez@zez-silko.cz http://www.zez-silko.cz			