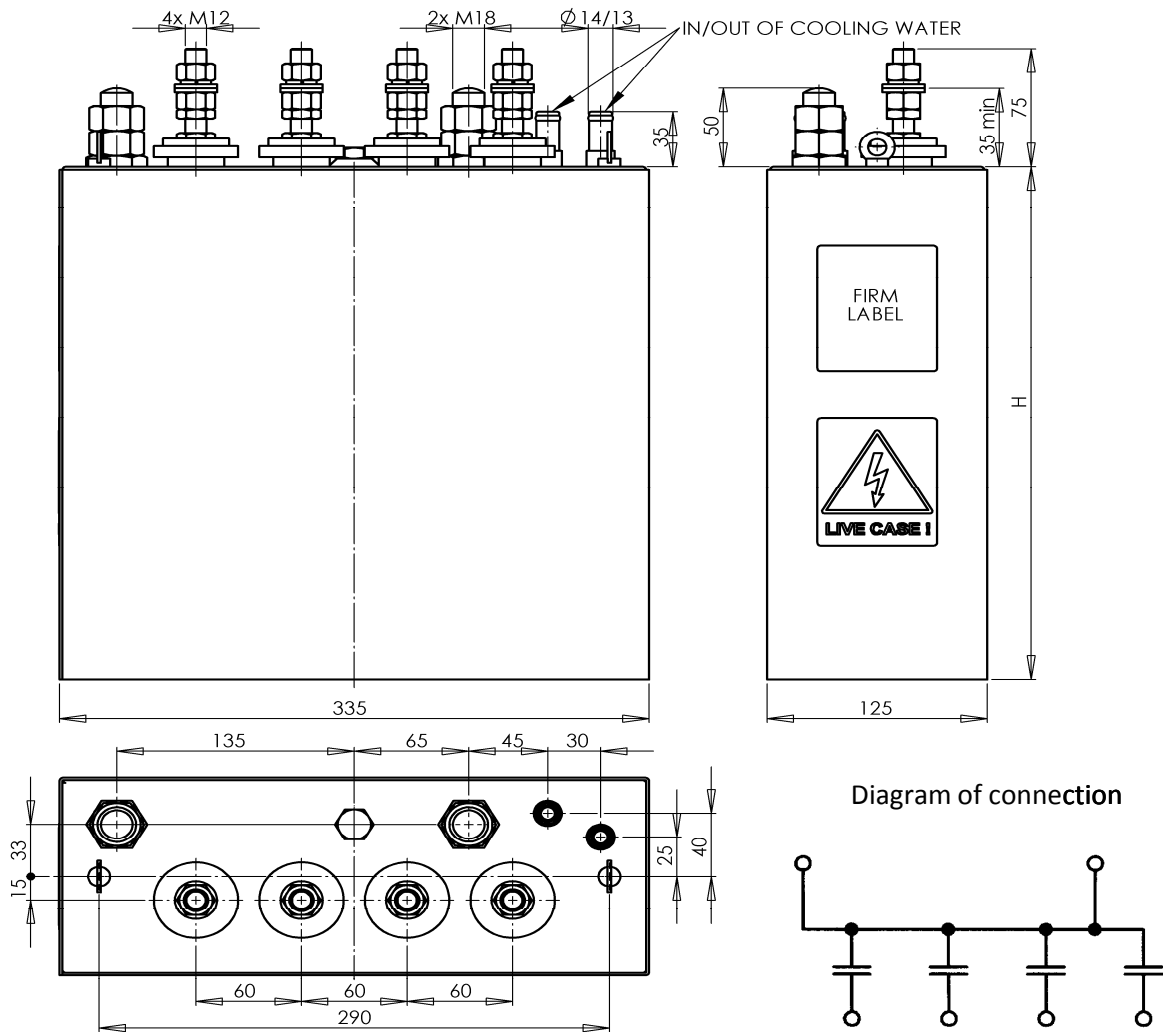


DATA SHEET

MF CAPACITOR


Outline drawing of type : **FRJJS 304 -Un/Cn/fn**



RATINGS:

FRJJS 304-0,8/57/2,4	0,8	57 (4x14,25)	2,4	550	687	250	16	1:1:1:1
FRJJS 304-0,8/112/1	0,8	112 (4x28)	1,0	450	563	250	16	1:1:1:1
FRJJS 304-0,8/150/0,5	0,8	150 (4x37,5)	0,5	302	380	325	26	1:1:1:1
Type	U_N [kV]	C_N [μ F]	f_N [kHz]	Q_N [kvar]	I_N [A]	H [mm]	weight [kg]	Tapping

TECHNICAL CHARACTERISTICS :

Case length	335 mm	Impregnant:	M-DBT	Rate of cooling water flow :	6l/min
Case width	125 mm	Standard:	IEC 60110/98	Max.outlet water temperature :	40°C
Case height	see table	Capacitance tolerance:	-5/+10%	Water pressure	max.0,6 MPa
Weight	see table	LIVE CASE			
		All-film		Torque for M12 :	15Nm
Order No. :				Torque for M18 :	22Nm
Testing voltage between terminals:		4xUn DC or 2x Un AC for 10sec		DRAWN :	Michalovičová
				APPVD :	Ing.Lipenský
TYPE :	FRJJS 304 -Un/Cn/fn	DRW. No. :	3BF 1494		20.11.2009
	ZEZ-SILKO s.r.o. Pod Černým lesem CZ 564 22 ŽAMBERK Czech Republic	tel : +420 465 673111 fax : +420 465 612319 e-mail : zez@zez-silko.cz http://www.zez-silko.cz			